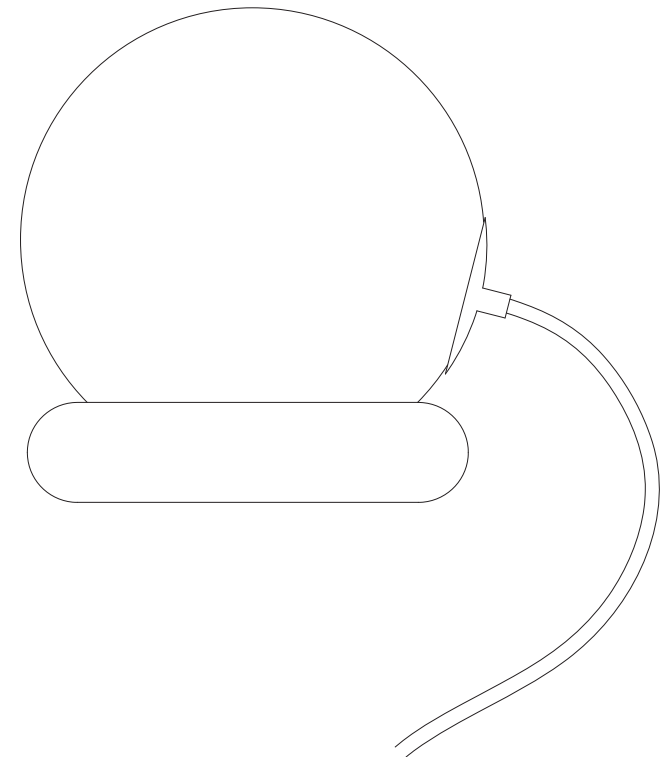


# REST LAMP

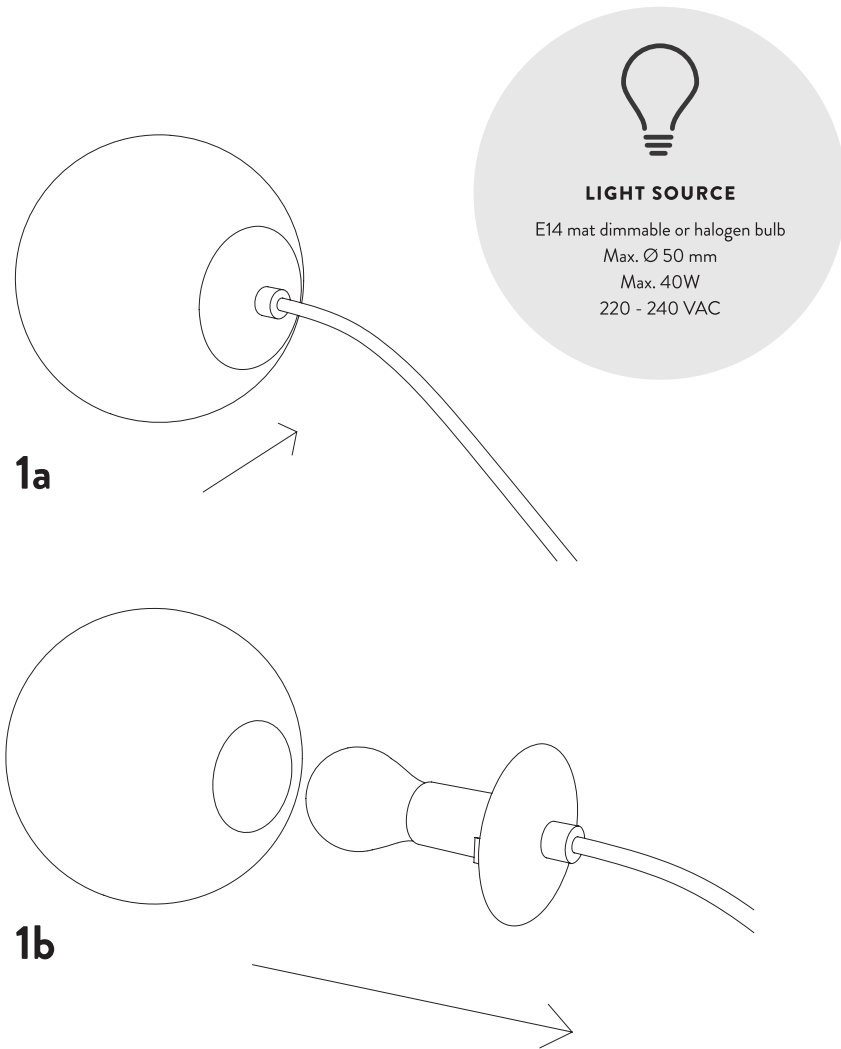
ASSEMBLY MANUAL - REST LAMP 5151


[fermliving.com](http://fermliving.com)



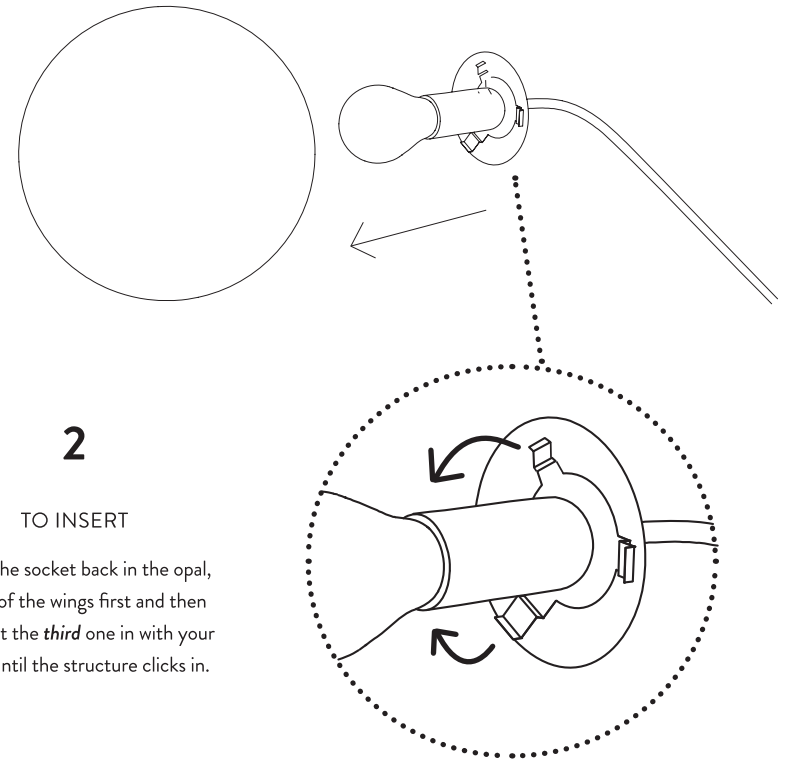
**ferm**  
L I V I N G

## ASSEMBLY PROCESS



  
**LIGHT SOURCE**  
 E14 mat dimmable or halogen bulb  
 Max. Ø 50 mm  
 Max. 40W  
 220 - 240 VAC

## ASSEMBLY PROCESS



**2**  
TO INSERT

To put the socket back in the opal, fit *two* of the wings first and then gently fit the *third* one in with your finger until the structure clicks in.

TO REMOVE

To remove the socket move the 3-wings metal structure to one side and then gently pull outwards. Try to do so pulling from the metal structure, rather than from the cable.



### WARNING:

IF THE EXTERNAL CABLE OF THIS LUMINAIRE IS DAMAGED, IT SHALL BE EXCLUSIVELY REPLACED BY THE MANUFACTURER OR HIS SERVICE AGENT OR A SIMILAR QUALIFIED PERSON IN ORDER TO AVOID A HAZARD. REMEMBER TO TURN OFF WHEN CHANGING THE LIGHT BULB. THIS LAMP IS NOT APPROVED FOR OUTDOOR USE. ISOLATION CLASS II.

ENVIRONMENTAL FRIENDLY DISPOSAL. YOU CAN HELP PROTECT THE ENVIRONMENT.

PLEASE REMEMBER TO RESPECT THE LOCAL REGULATIONS: HAND IN THE NON-WORKING ELECTRICAL EQUIPMENT'S TO AN APPROPRIATE WASTE DISPOSAL CENTRE.

THE PACKAGING MATERIAL IS RECYCLABLE. DISPOSE OF THE PACKAGING IN AN ENVIRONMENTALLY FRIENDLY MANNER AND MAKE IT AVAILABLE FOR THE RECYCLABLE MATERIAL COLLECTION-SERVICE.